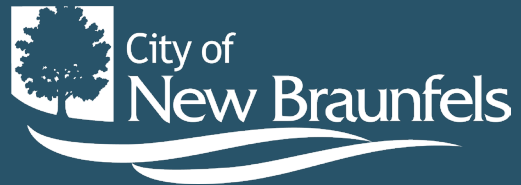


Dry Comal Creek and Comal River Watershed Protection Plan Implementation Update

GBRA Clean Rivers Program
Steering Committee Meeting – FY24

April 23, 2024

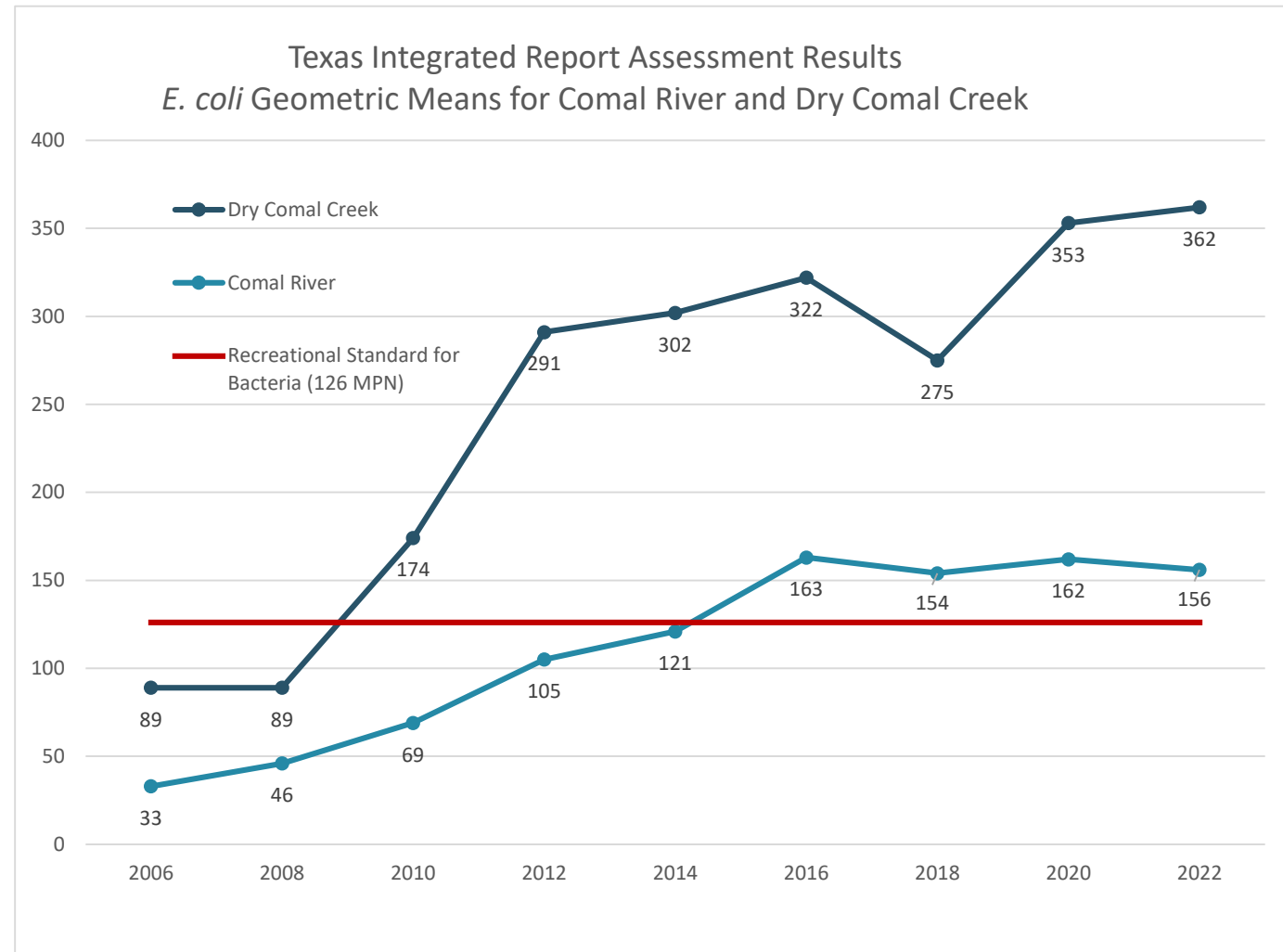


Water Quality Concerns

▲ **Dry Comal Creek:** initially placed on the 303(d) list for bacteria in 2010.

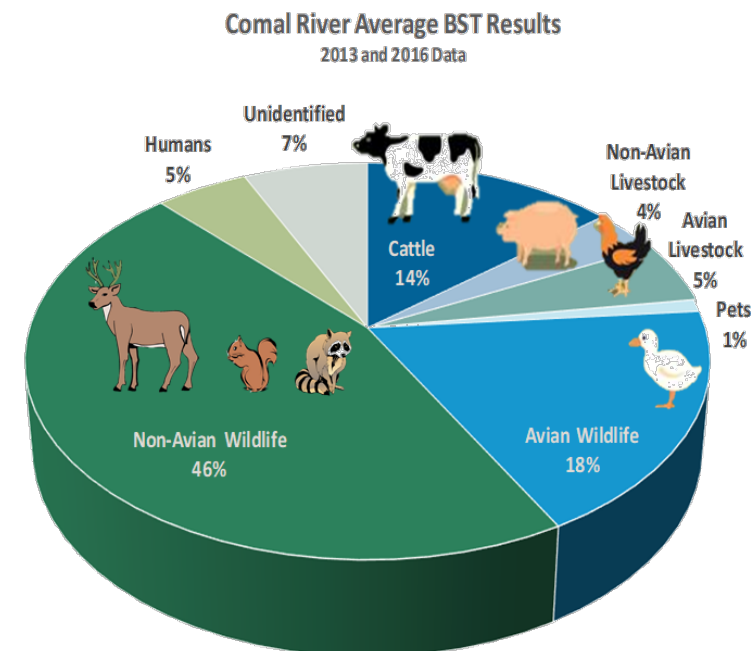
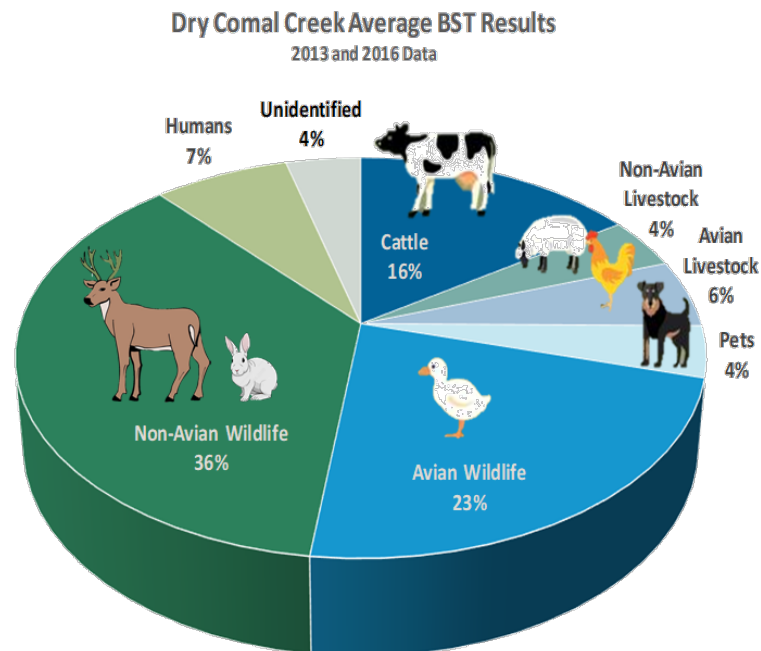
▲ **Comal River:** initially placed on the 303(d) list for bacteria in 2016.

▲ **Note:** Each data point represents the GeoMean of approx. 84 samples. For example, the 2020 assessment data points include 84 samples collected 2011-2018.



Water Quality Concerns

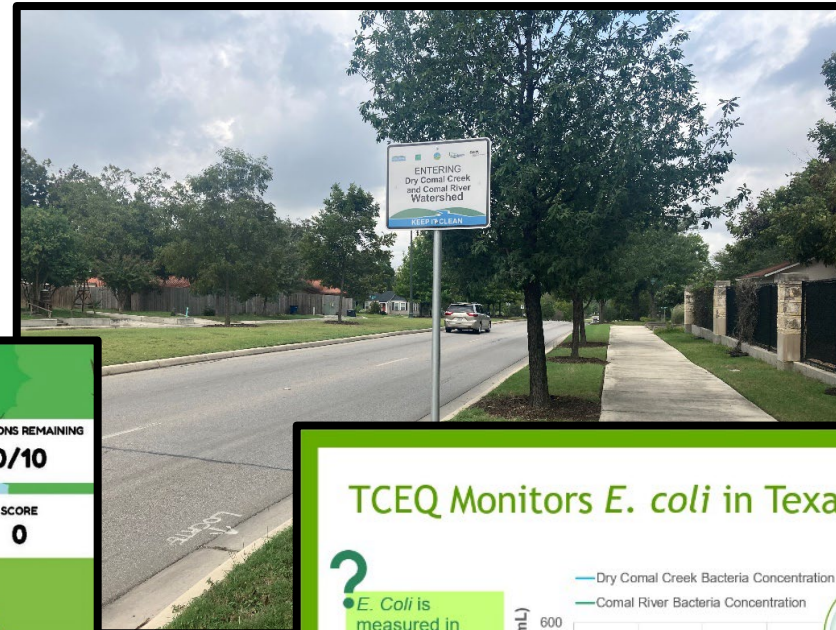
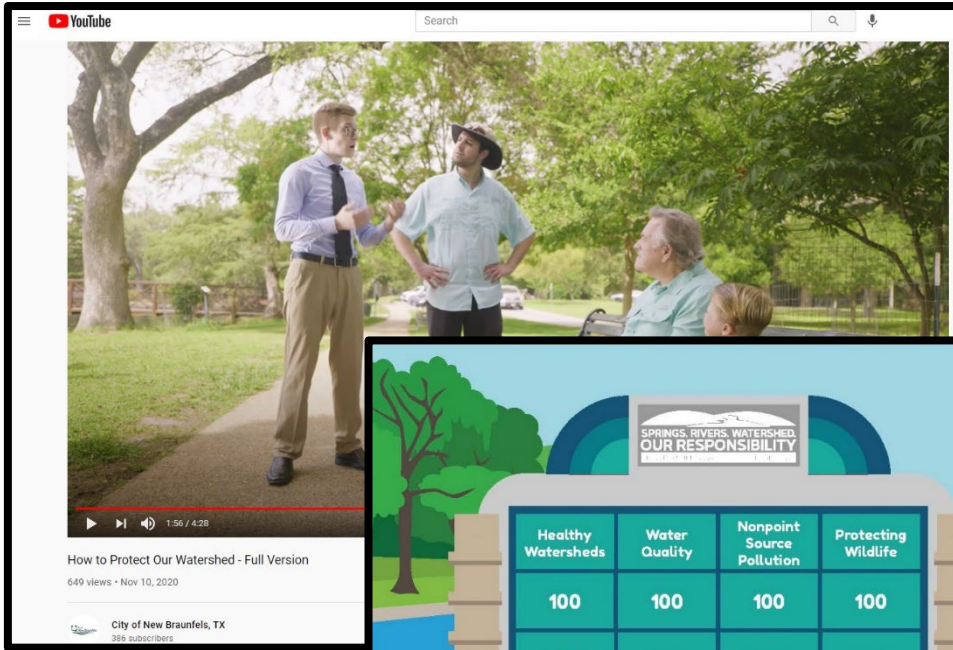
- ▲ Bacteria Source Tracking (BST) analysis was conducted in 2013 & 2016 by Texas A&M lab to identify sources of bacteria in creek/ river
- ▲ Approx. 60% of the bacteria found in Comal River & Dry Comal Creek from wildlife
- ▲ The Watershed Protection Plan (WPP) for the Dry Comal Creek and Comal River includes wildlife management measures to address bacteria loading.



Previous Efforts



Previous Efforts

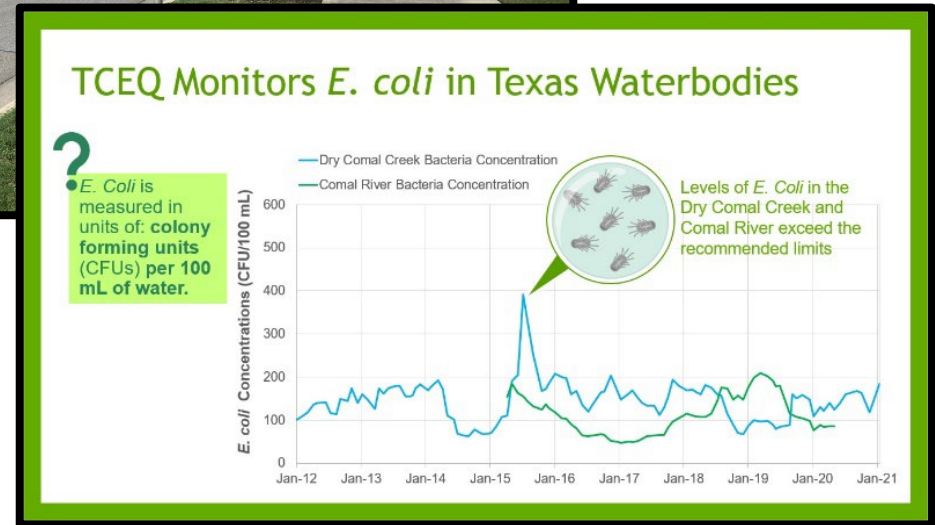


SPRINGS, RIVERS, WATERSHED. OUR RESPONSIBILITY.

QUESTIONS REMAINING: 0/10
SCORE: 0

Healthy Watersheds	Water Quality	Nonpoint Source Pollution	Protecting Wildlife
100	100	100	100
200	200	200	200
300	300	300	300
400	400	400	400
500	500	500	500
600	600	600	600

City of New Braunfels logo on podium.



WPP Advertising Campaign

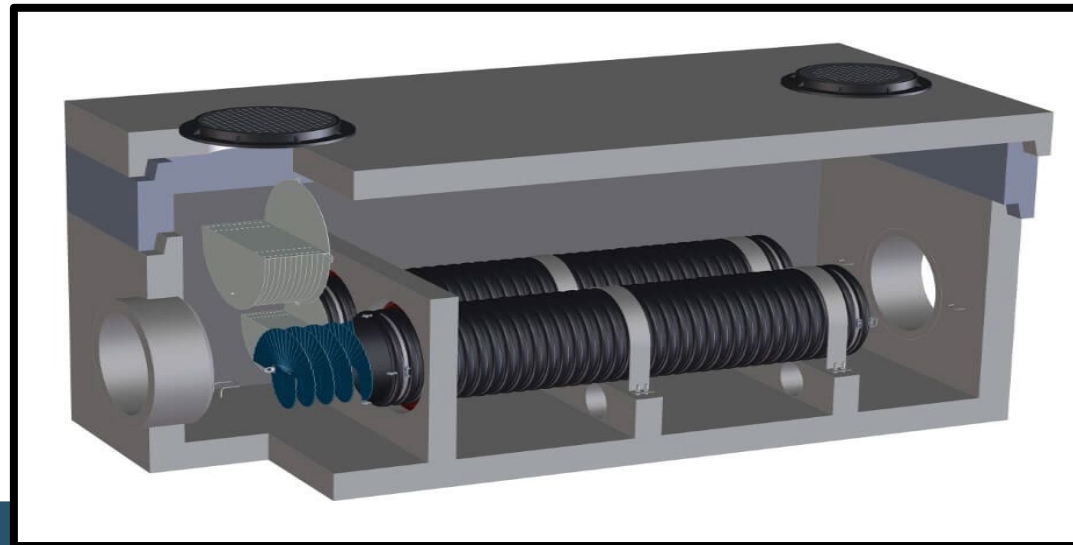
- Marketing campaign to include:
 - Sponsored Advertisements on Social Media
 - Google Advertisements
 - WPP Video
 - YouTube
 - Local Movie Theaters
 - Printed Advertisements
 - Herald-Zeitung
 - Community Impact
- Ads will focus on 'Do Not Feed Wildlife' ordinance education and reasoning behind it.



BMPs Addressing Stormwater

Stormwater Structural BMP

- Design work has been completed for a stormwater filtration system to be installed at Bergfeld Ave.
- Pilot study; upstream and downstream data collected will be used to determine effectiveness of filter system
 - IDEXX Laboratories Colilert-18
 - Two additional biofiltration beds will also be sampled



BMPs Addressing Stormwater



Questions?

Phillip Quast
Watershed Supervisor
City of New Braunfels
pquast@newbraunfels.gov

